

PLUMBING GENERAL NOTES:

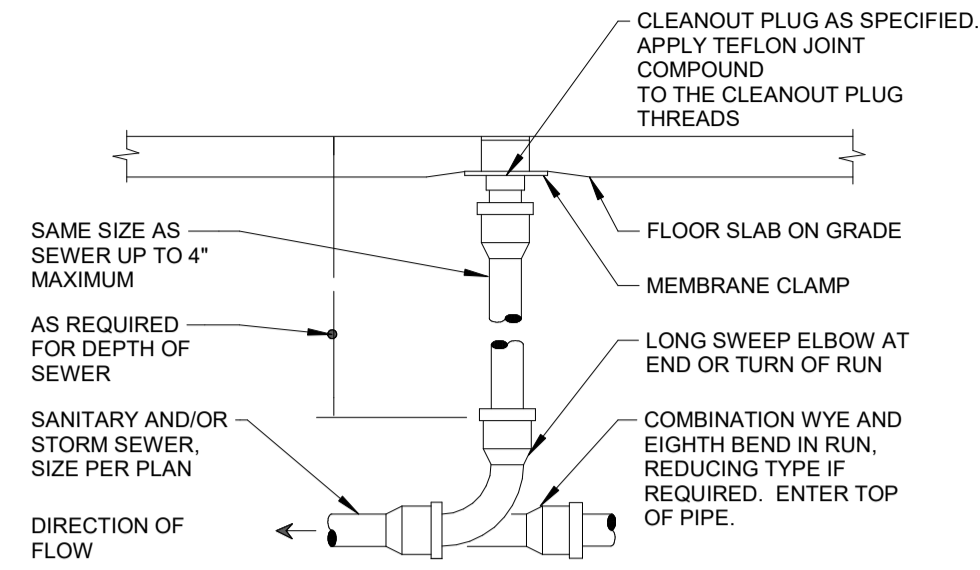
- THE SYMBOLS ARE FOR THE CONVENIENCE OF THE CONTRACTOR. CONTRACTOR SHALL VERIFY QUANTITIES AND FURNISH ALL MATERIALS REQUIRED FOR FULLY OPERATIONAL SYSTEM, WHETHER SPECIFIED OR NOT.
- REFER TO ARCHITECTURAL FLOOR PLANS AND ELEVATION FOR EXACT LOCATIONS AND MOUNTING HEIGHTS OF ALL PLUMBING FIXTURES BEFORE INSTALLATION OR MAKE-UP OF PIPE. PLUMBING FIXTURES SHALL BE MOUNTED AT HEIGHTS SHOWN ON THE ARCHITECTURAL PLANS.
- CONTRACTOR SHALL VERIFY THAT FIXTURES SUPPLIED ARE APPROVED PER ALL APPLICABLE STATE, LOCAL AND GOVERNING AUTHORITIES.
- REFER TO THE PLUMBING ROUGH-IN SCHEDULE FOR THE SIZES OF BRANCH PIPES TO PLUMBING FIXTURE.
- FOR CLARITY, NOT ALL VALVES HAVE BEEN SHOWN. PROVIDE BALL VALVES FOR ALL WATER ISOLATION AND SUPPLY TAKEOFFS.
- REFER TO ARCHITECTURAL DRAWINGS FOR EXACT LOCATION OF ALL FIRE RATED AND/OR SMOKE RATED WALLS AND ASSEMBLIES. PIPING PENETRATIONS OF FIRE AND SMOKE RATED WALLS AND ASSEMBLIES SHALL BE CAULKED AIR TIGHT TO THE ADJACENT STRUCTURE WITH A UL LISTED FIRE PROOF MATERIAL.
- COORDINATE ALL PLUMBING ROUTING WITH GENERAL CONTRACTOR AND OTHER TRADES. PROVIDE NECESSARY OFFSETS TO AVOID CONFLICTS AND TO MAINTAIN REQUIRED EQUIPMENT ACCESS AND SERVICEABILITY.
- PIPING LOCATIONS HAVE BEEN SHOWN FOR CLARITY AND DO NOT NECESSARILY REFLECT THE SPECIFIC LOCATION OF PIPE. COORDINATE ROUTING OF ALL PIPING WITH ALL OTHER TRADES BEFORE INSTALLATION.

PLUMBING SYMBOL LIST & ABBREVIATION

NOT ALL SYMBOLS MAY APPLY.

SYMBOL:	DESCRIPTION:
	COLD WATER - POTABLE
	HOT WATER - POTABLE
	SANITARY DRAINAGE
	VENT
	PIPE CONTINUATION
	PIPE CAP
	PIPE DOWN
	PIPE UP OR UP/DOWN
	PIPE SERVING FIXTURE ON FLOOR ABOVE (EXAMPLE: FD = FLOOR DRAIN)
	PITCH PIPE IN DIRECTION
	DIRECTION OF FLOW IN PIPE
	SHUT OFF VALVE
	SAFETY/RELIEF VALVE
	VACUUM BREAKER
	THERMOMETER WITH WELL (FILLED TYPE)
	METER
BT	BATHTUB
CO	CLEANOUT
FCO	FLOOR CLEANOUT
FD	FLOOR DRAIN
LAV	LAVATORY
MB	MOP BASIN
SK	SINK
TYP	TYPICAL
VTR	VENT THROUGH ROOF
WC	WATER CLOSET
WH	WATER HEATER
WM	WATER METER

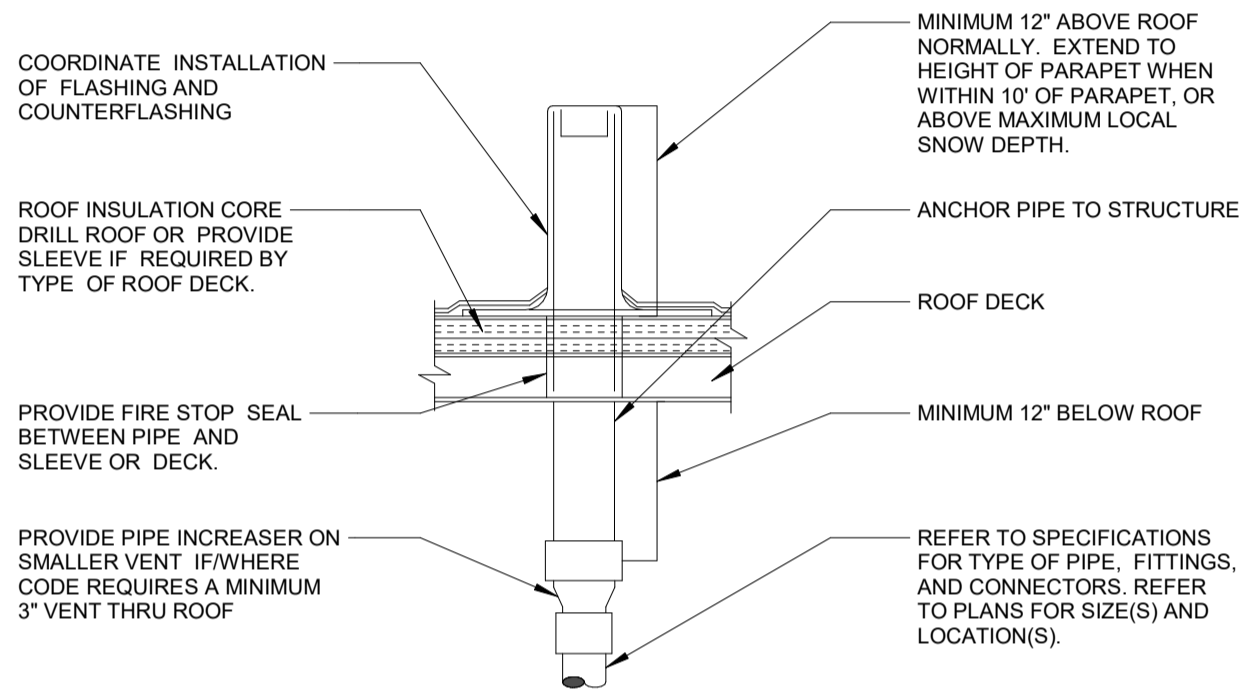
PROVIDE CLEANOUT WITH ADJUSTABLE CLEANOUT TOP WITH VARIATIONS SUITABLE FOR FLOOR COVERING (CARPET MARKER, RECESSED FOR TILE, SCORED FOR UNFINISHED FLOORS). CLEAN THE TOP OF EXPOSED FCO AFTER INSTALLATION.



REFER TO SPECIFICATIONS AND SCHEDULE FOR MORE INFORMATION. LOCATE AT BUILDING EXIT, AT ENDS OF RUNS, AT TURNS OF PIPE GREATER THAN 45°, AT 50' INTERVALS ON STRAIGHT RUNS, AND/OR WHERE SHOWN ON PLANS AND RISERS. PROVIDE BACKFILL PER ARCHITECTURAL SPECIFICATIONS. LOCATE CLEANOUT WHERE THERE IS 18" CLEAR AROUND, FOR ACCESSIBILITY. CONSULT LOCAL CODES AND OFFICIALS FOR OTHER REQUIREMENTS.

1 FLOOR CLEANOUT1

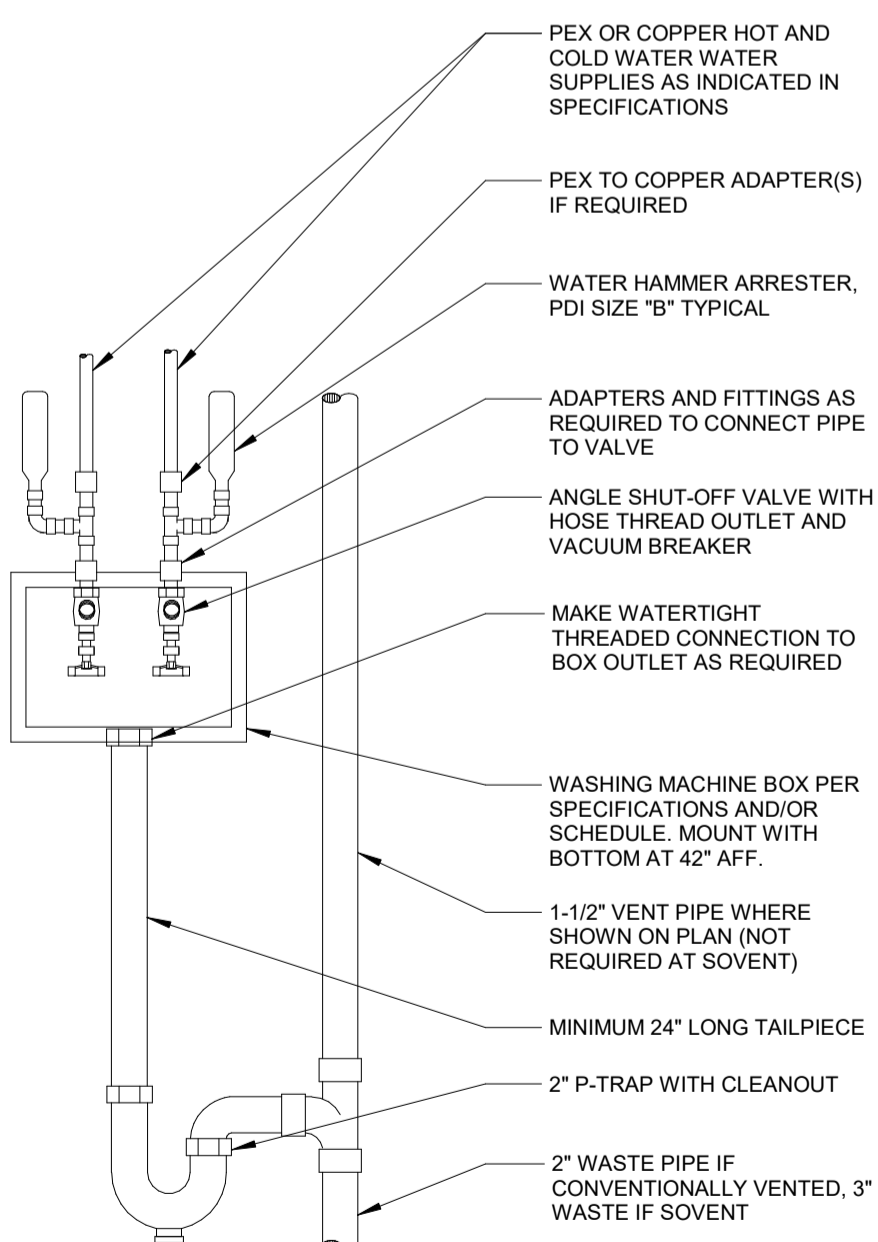
NO SCALE



LOCATE VTR MINIMUM THREE FEET FROM PROPERTY LINE, TEN FEET HORIZONTAL OR THREE FEET VERTICAL ABOVE ANY BUILDING OPENING OR FRESH AIR INTAKE, TWENTY FIVE FEET FROM ANY OPENING OR FRESH AIR INTAKE IN MEDICAL FACILITIES AND ONE FOOT FROM ANY VERTICAL SURFACE. REFER TO LOCAL CODES FOR OTHER VENT TERMINATION REQUIREMENTS. LOCATE VTR MINIMUM 18" FROM ADJACENT WALL, PARAPET, EXPANSION JOINT, ROOF DRAIN, EQUIPMENT CURB, OR OTHER ROOF FEATURE. OFFSET IN CEILING SPACE WHERE REQUIRED TO MEET THESE CONDITIONS. INSULATE LAST SIX FEET OF VENT PIPE INSIDE BUILDING PER SPECIFICATIONS.

2 VENT THRU ROOF

NO SCALE



PIPING ARRANGEMENT SHOWN IS SCHEMATIC. ADJUST TO SUIT FIELD CONDITIONS. PROVIDE CONNECTIONS AS RECOMMENDED BY EQUIPMENT MANUFACTURER.

3 WASHING MACHINE BOX

NO SCALE

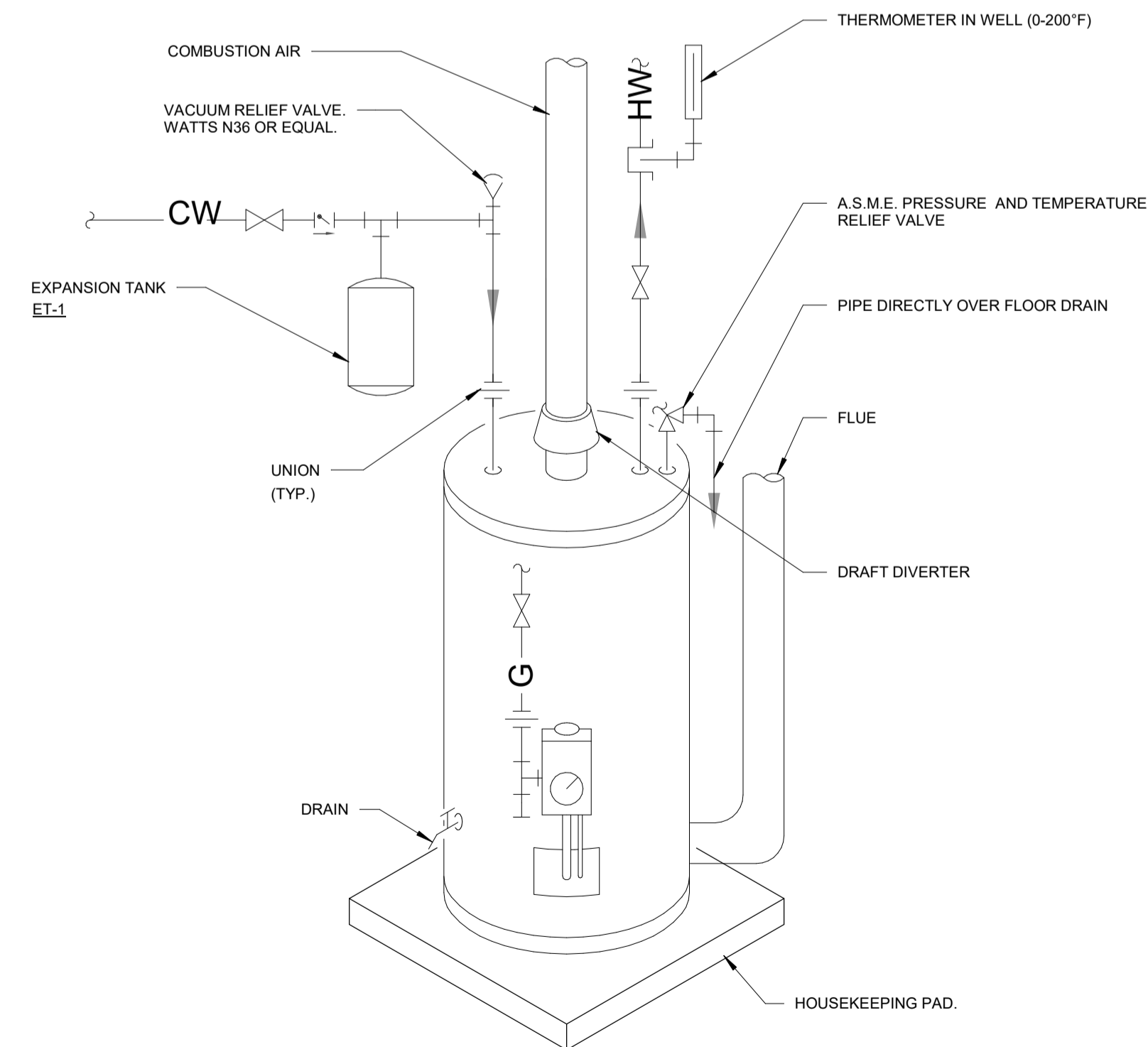
TAG	MANUFACTURER	MODEL	STORAGE (GALLONS)	RECOVERY @ 80 °F RISE (GPH)	WEIGHT (LBS)	ELECTRICAL VOLT-PH	NOTE
WH-1	A.O.SMITH	BTH-150	100	80	553	120-1	1,2

NOTES:
1. NATURAL GAS PRESSURE IS 3.5"W.C.-14"W.C.
2. PROVIDE FLUE AND INTAKE AIR AIR AS PER MANUFACTURER INSTRUCTION.

FIXTURE TYPE	DOMESTIC C.W.	DOMESTIC H.W.	SANITARY	VENT
WATER CLOSET	1/2"	-	3"	1 1/2"
LAVATORY	1/2"	1/2"	1 1/4"	1 1/4"
SINK	3/4"	3/4"	1 1/2"	1 1/2"
SHOWER	1/2"	1/2"	1 1/2"	1 1/4"
BATHTUB	3/4"	3/4"	3"	1 1/2"
BATHTUB	1/2"	1/2"	2"	1 1/4"
WASHING MACHINE FIXTURE	3/4"	3/4"	2"	1 1/4"
FLOOR DRAIN	-	-	3"	1 1/2"

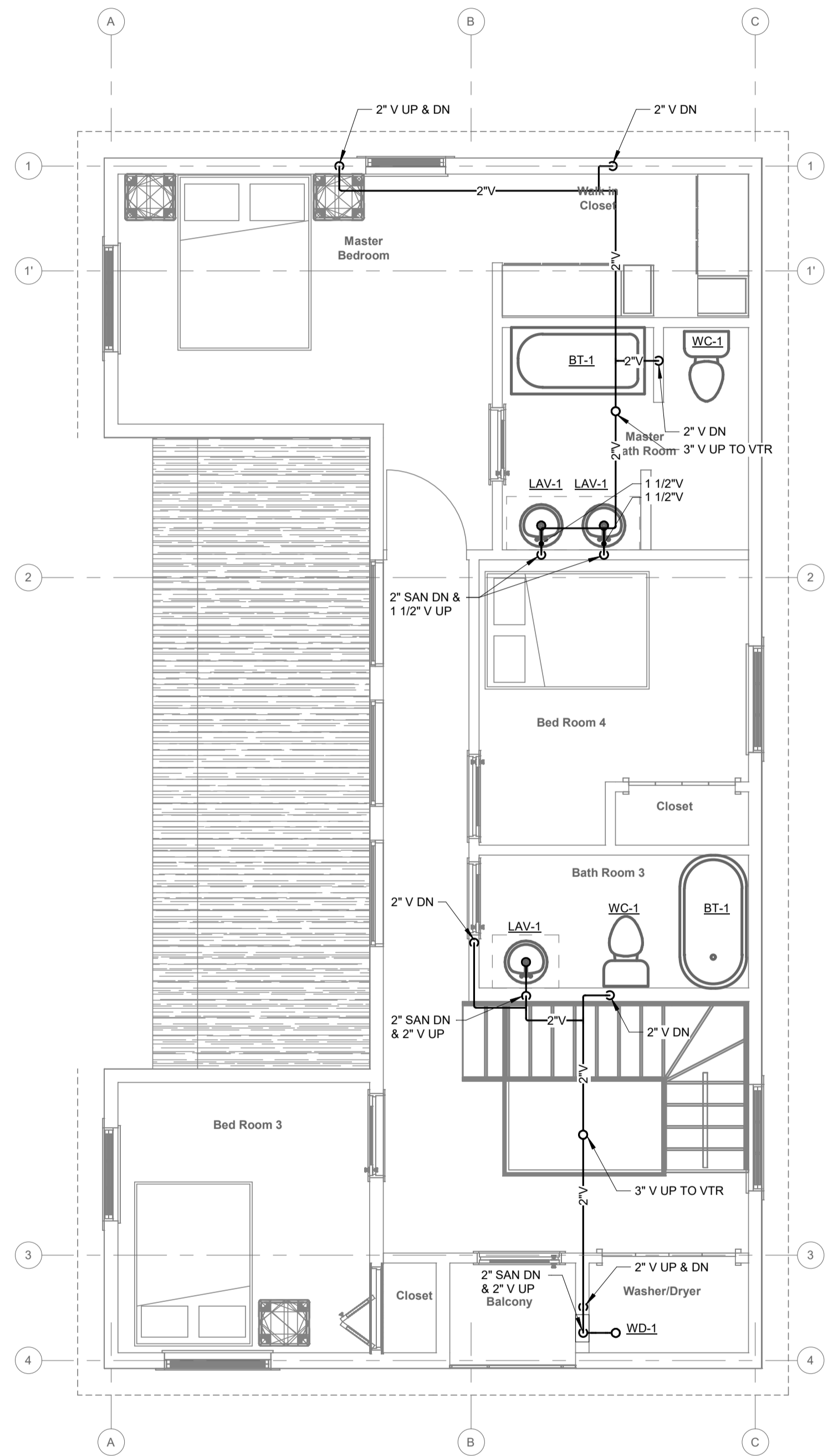
NOTES:
1. SANITARY RISER UP IN WALL TO FIXTURE SHALL BE A MINIMUM OF 2".
2. 1/2" CW AND HW APPLIES TO THE FINAL VERTICAL RISER-DROP TO EACH FIXTURE. BRANCH PIPING TO VERTICAL DROP SHALL BE MINIMUM OF 3/4".
3. SIZES SHOWN ARE MINIMUMS.

Sheet Number	Sheet Name	Current Revision
P0.1	PLUMBING COVER SHEET AND DETAILS	
P1.0	UNDERFLOOR, BASEMENT AND FIRST FLOOR WASTE & VENT PLUMBING FLOOR PLAN	
P1.1	SECOND AND ROOF FLOOR WASTE & VENT PLUMBING FLOOR PLAN	
P2.0	BASEMENT, FIRST AND SECOND FLOOR WATER PLUMBING FLOOR PLAN	
P3.0	BASEMENT, FIRST AND SECOND FLOOR GAS FLOOR PLAN	
P3.1	PLUMBING AND DOMESTIC RISER DIAGRAM	

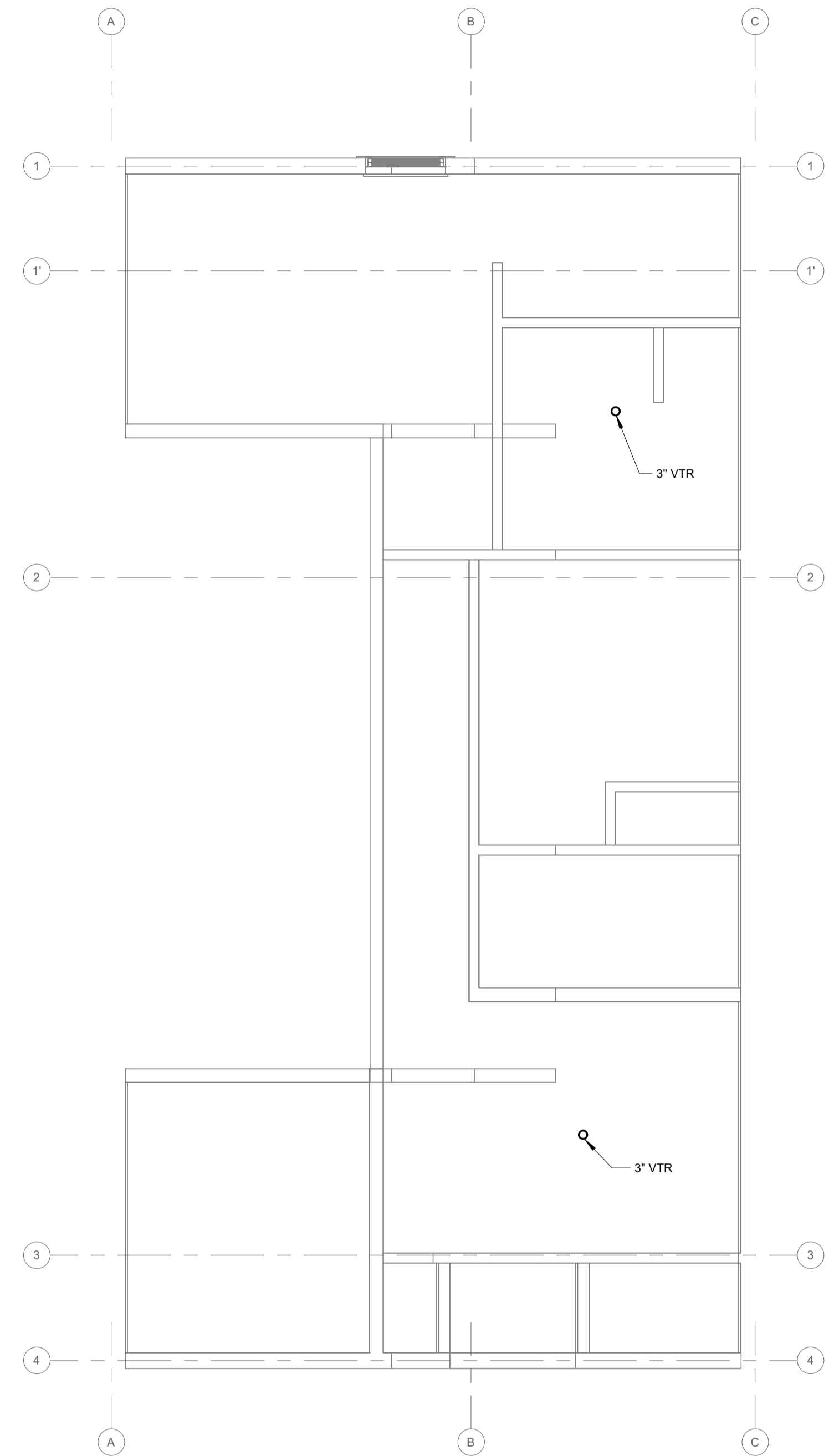


4 WATER HEATER

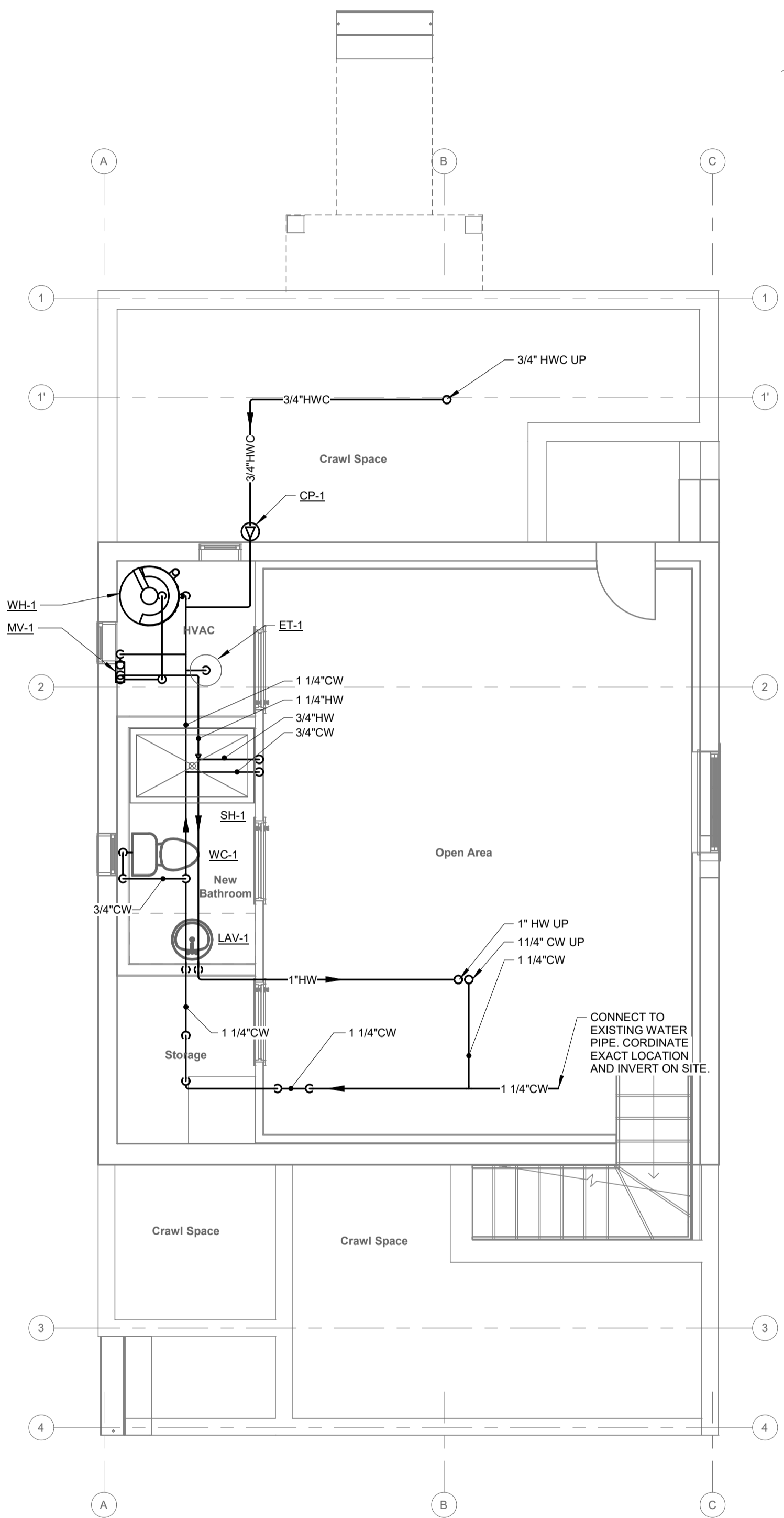
NO SCALE



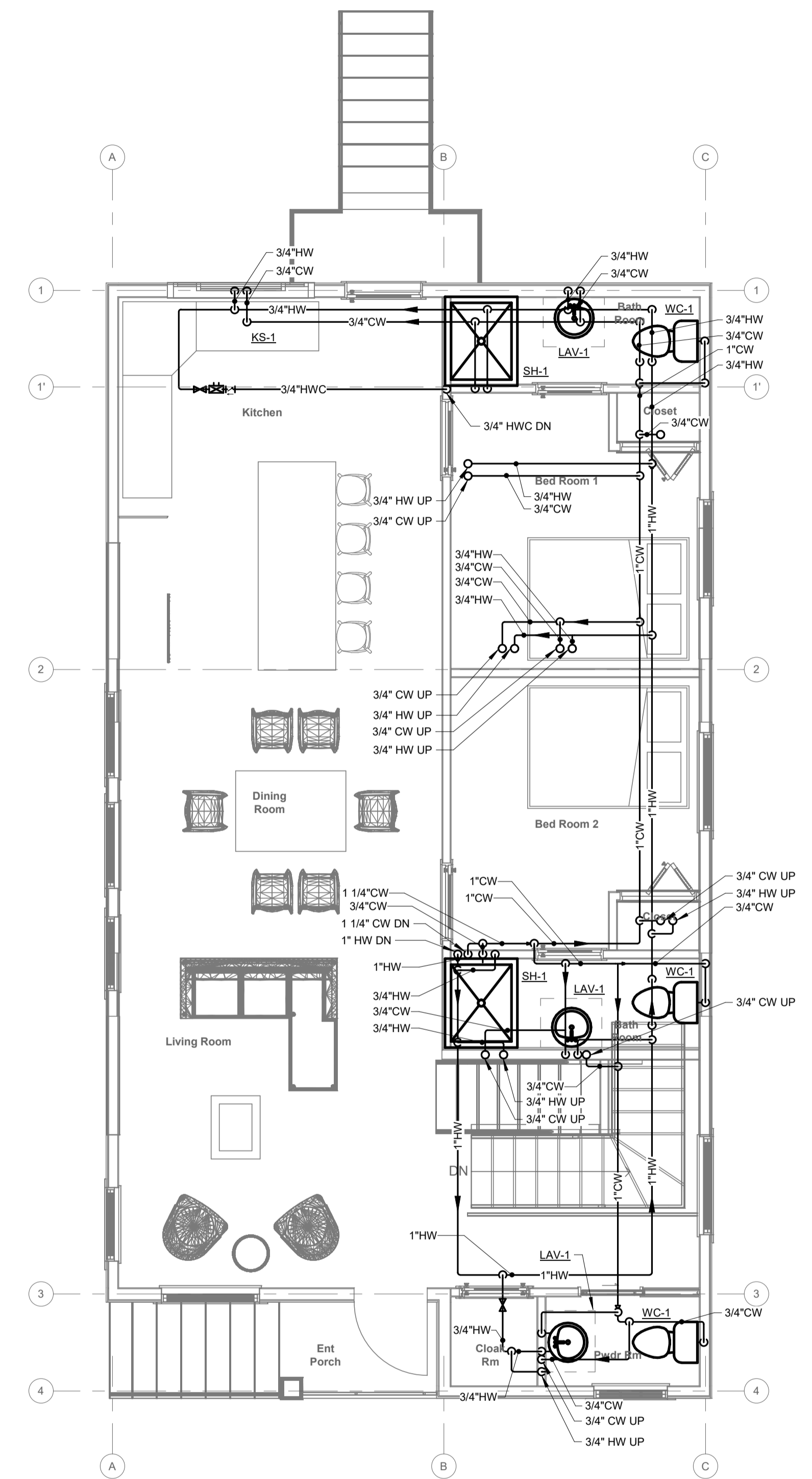
① LEVEL 2 WASTE & VENT PLUMBING FLOOR PLAN
1/4" = 1'-0"



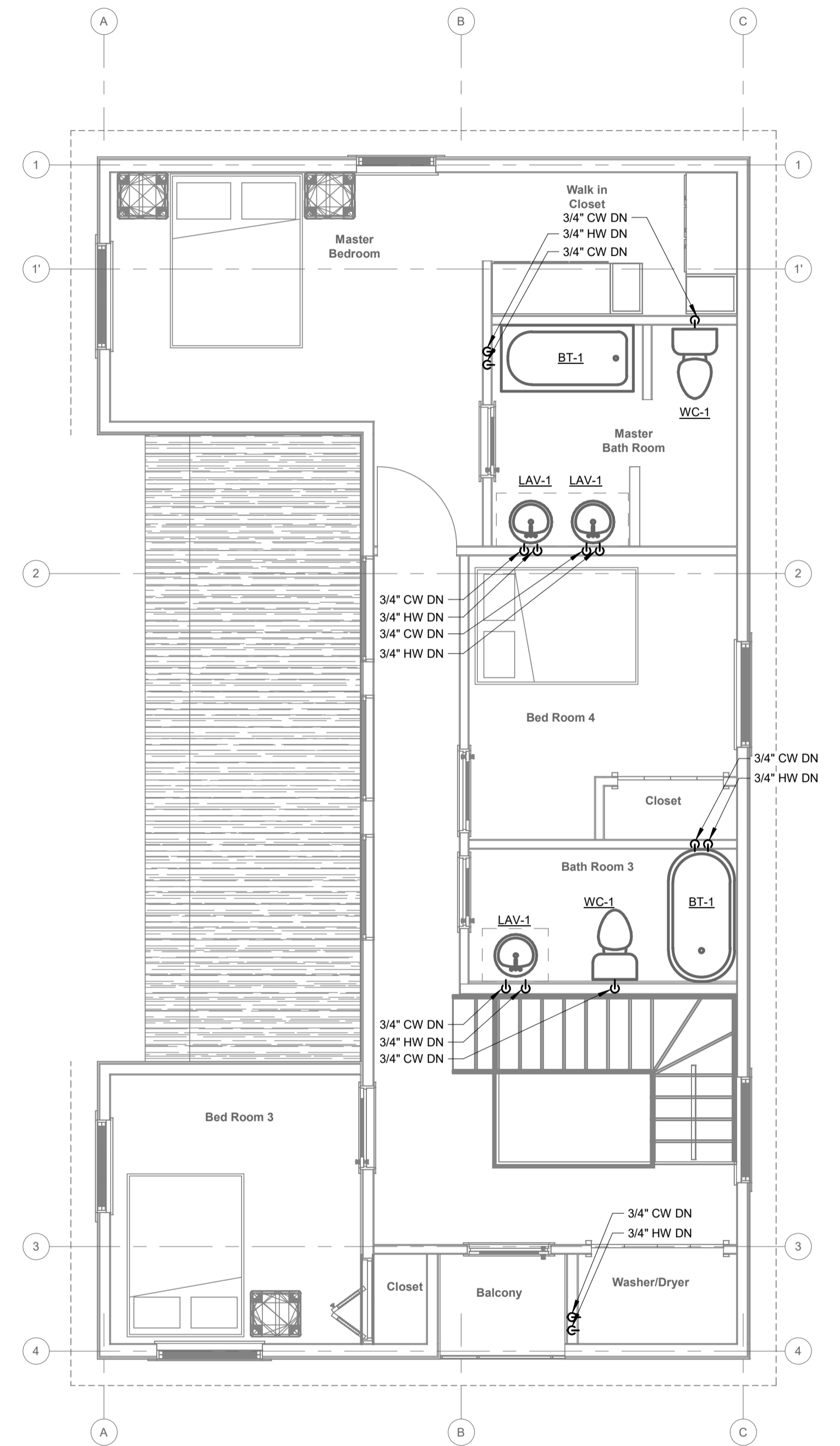
② ROOF WASTE & VENT PLUMBING PLAN
1/4" = 1'-0"



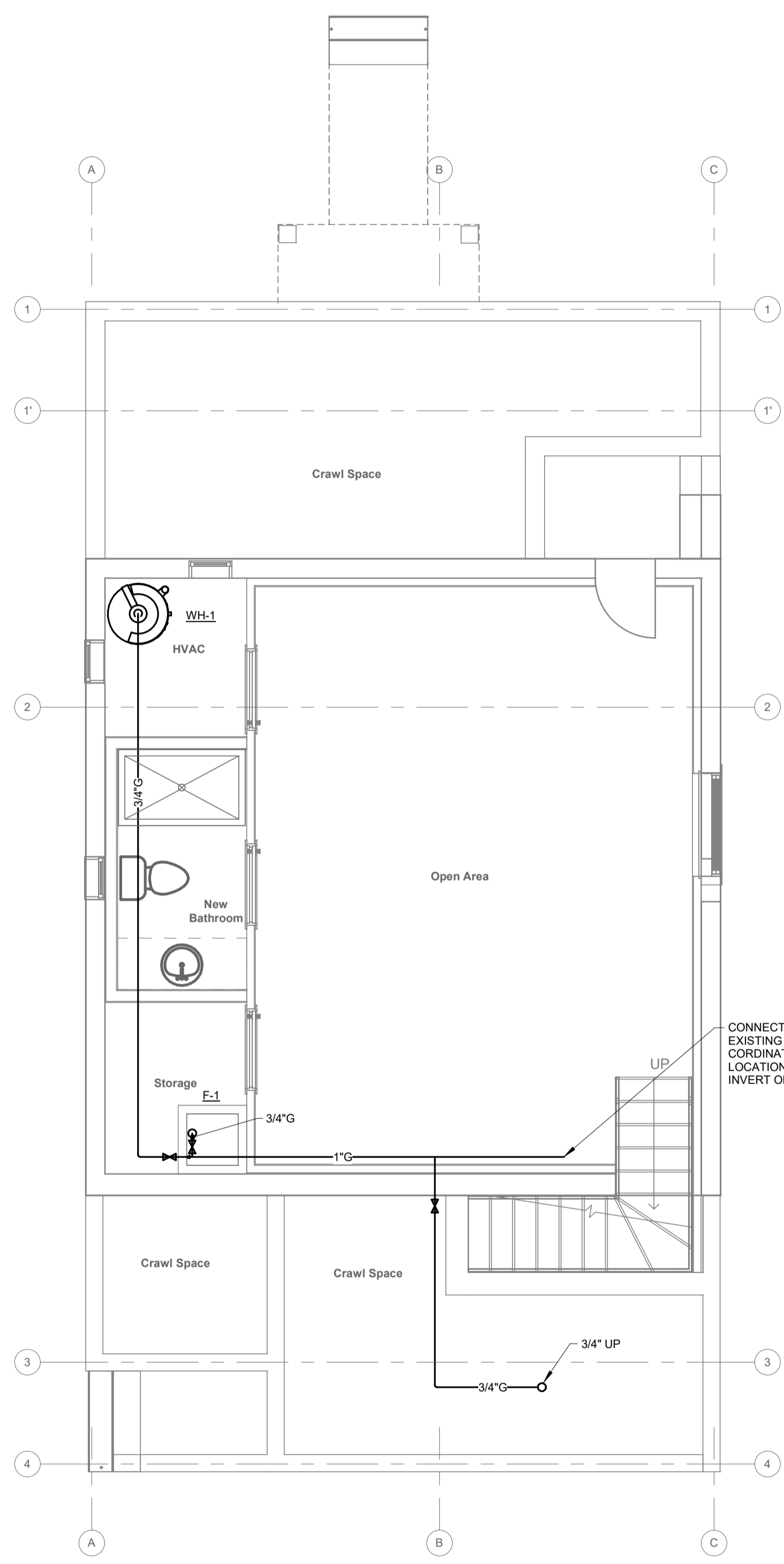
① BASEMENT DOMESTIC PLUMBING FLOOR PLAN
1/4" = 1'-0"



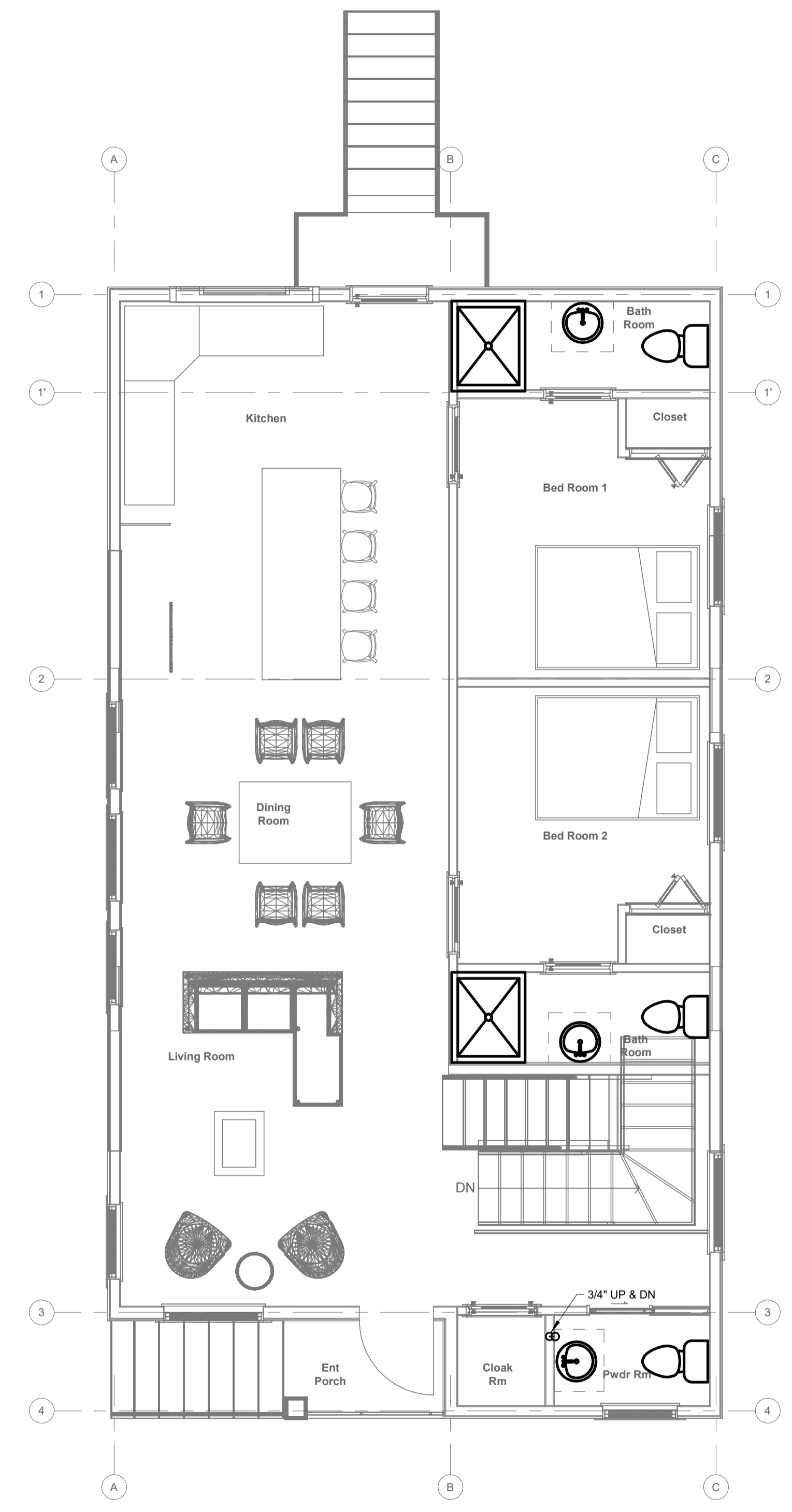
② LEVEL 1 DOMESTIC PLUMBING FLOOR PLAN
1/4" = 1'-0"



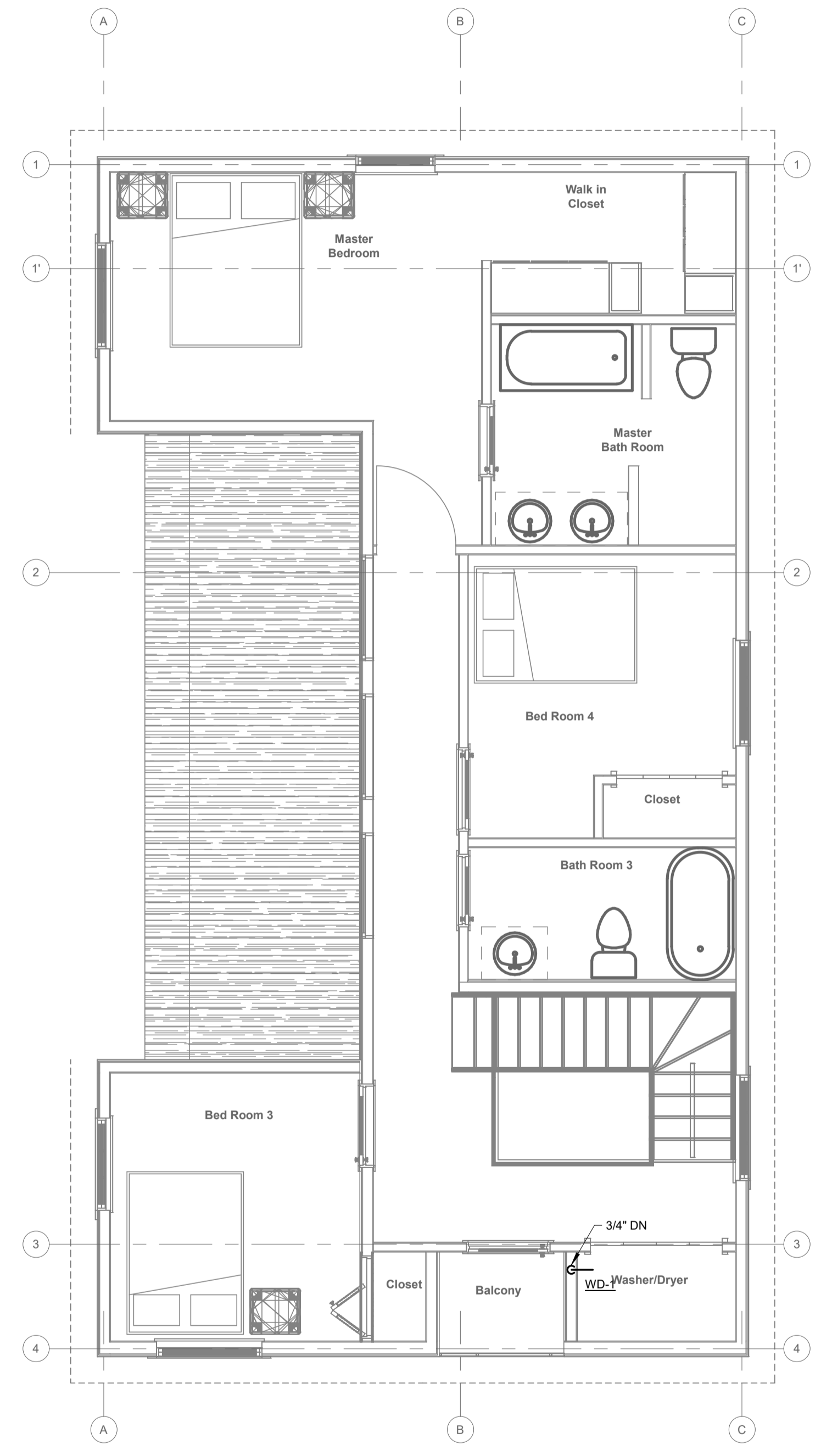
③ LEVEL 2 DOMESTIC PLUMBING FLOOR PLAN
1/4" = 1'-0"



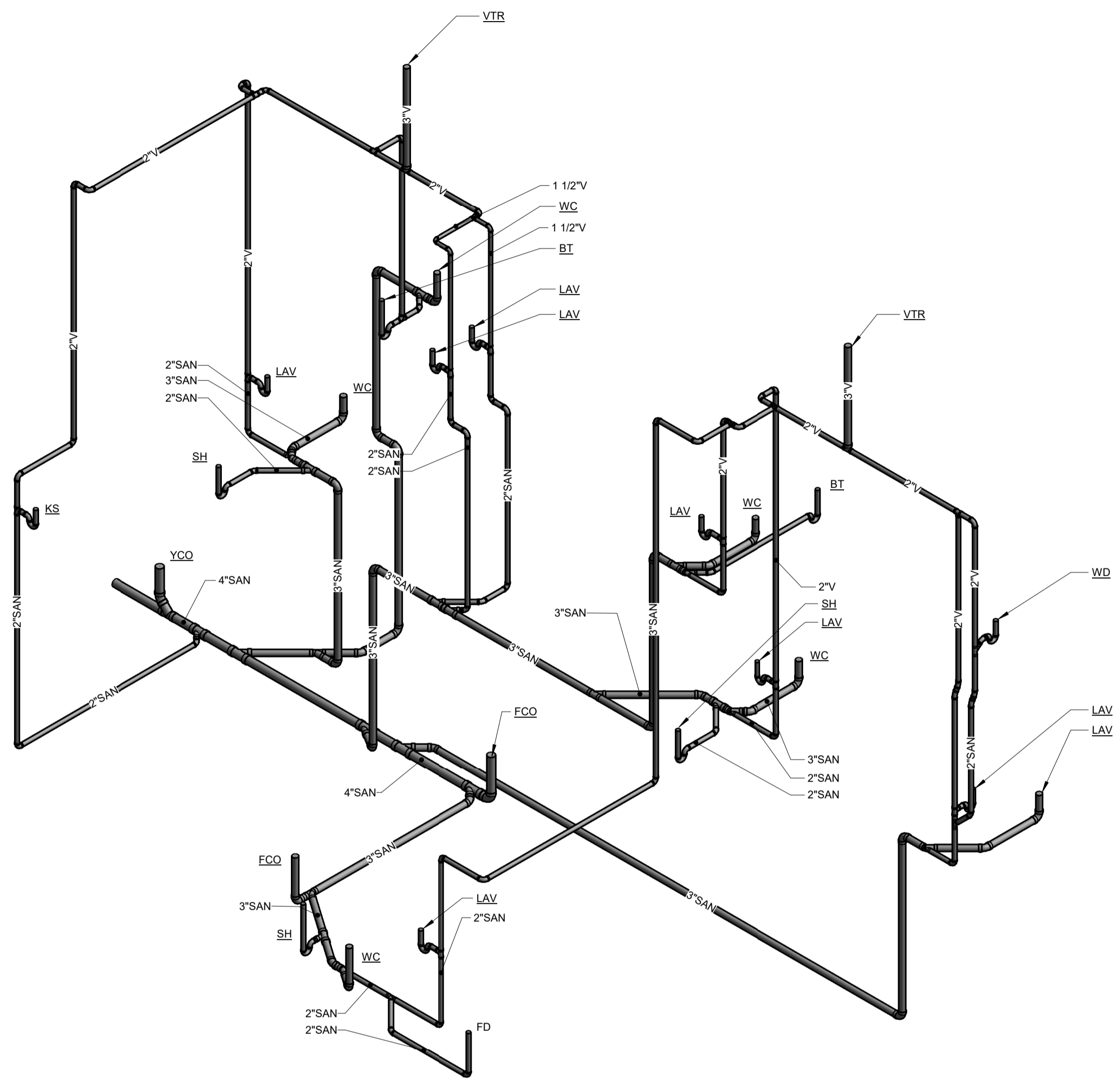
① BASEMENT GAS PLUMBING FLOOR PLAN
 1/4" = 1'-0"



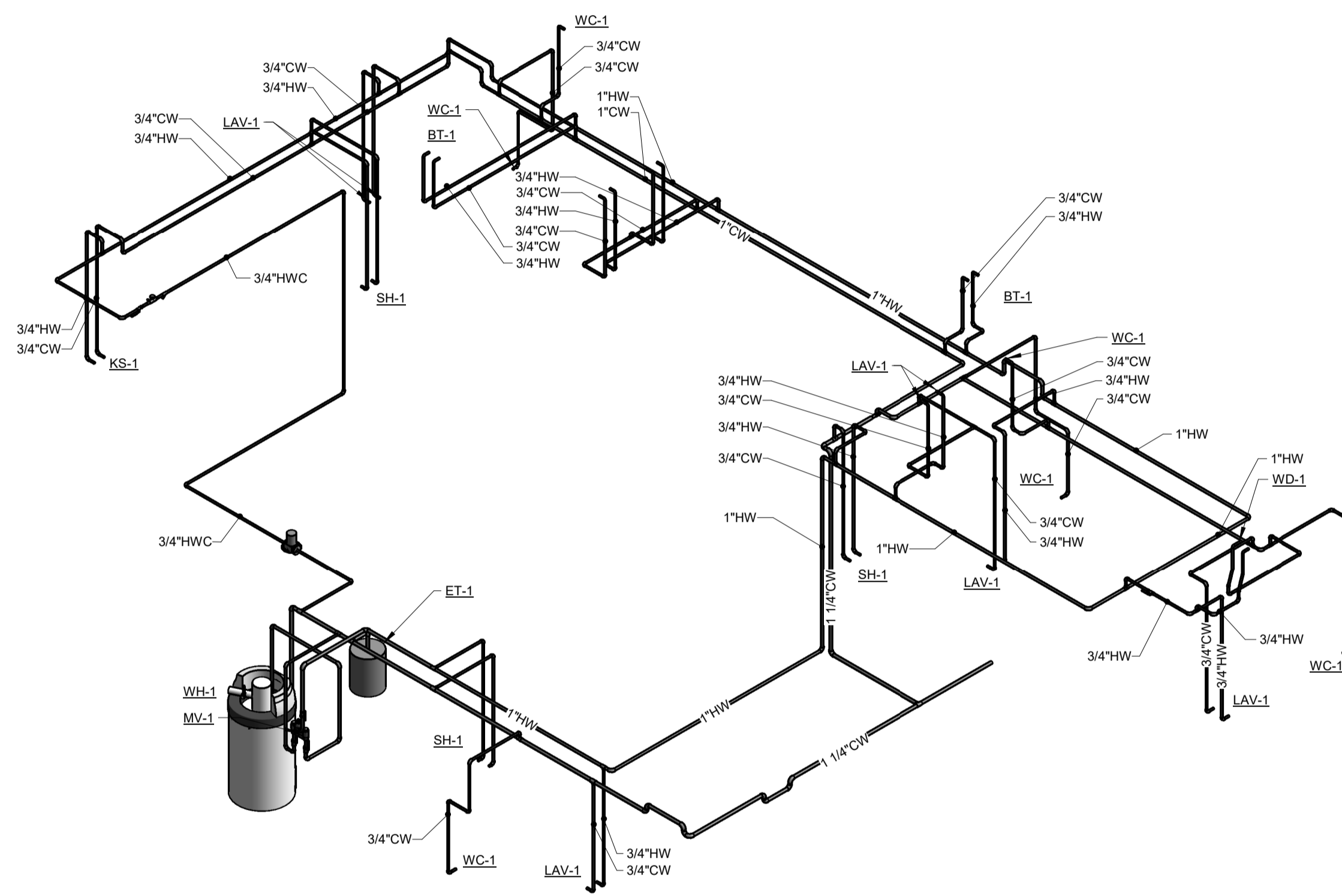
② LEVEL 1 GAS PLUMBING FLOOR PLAN
 1/4" = 1'-0"



③ LEVEL 2 GAS PLUMBING FLOOR PLAN
 1/4" = 1'-0"



① PLUMBING RISER



② DOMESTIC RISER