

MECHANICAL SYMBOL LIST AND ABBRIVATION.

NOT ALL SYMBOLS MAY APPLY.

SYMBOL:	DESCRIPTION:
	MANUAL VOLUME DAMPER
	DUCT CAP
	DUCT DOWN
	DUCT UP
	SUPPLY/OUTSIDE AIR DUCT SECTION
	RETURN AIR DUCT SECTION
	EXHAUST/RELIEF AIR DUCT SECTION
SG-1 6/115	AIR TERMINAL PROPERTIES SYMBOL NECK SIZE/CFM
	THERMOSTAT/SENSOR
EF	EXHAUST FAN
EA	EXHAUST AIR
SA	SUPPLY AIR
TG	TRANSFER GRILLE
TD	TRANSFER DUCT

MECHANICAL GENERAL NOTES:

- ALIGN TEMPERATURE SENSORS WITH LIGHT SWITCHES WHEN IN CLOSE PROXIMITY TO EACH OTHER.
- REVIEW SPACE REQUIREMENTS OF EQUIPMENT SPECIFIED AND MAKE REASONABLE ACCOMMODATIONS IN LAYOUT AND PROVIDE PROPER ACCESS AND CLEARANCES REQUIRED FOR OPERATION, MAINTENANCE, CODE COMPLIANCE.
- SEAL ALL FLOOR, WALL AND ROOF PENETRATIONS AIRTIGHT WHERE DUCT PENETRATE.
- EQUIPMENT SIZES AND SERVICE CLEARANCE REQUIREMENTS VARY AMONG DIFFERENT MANUFACTURERS. COORDINATE WITH LAYOUT OF EQUIPMENT PADS, DUCTWORK ETC.
- MANUFACTURER SHOWN IN SCHEDULE IS BASIS OF DESIGN.
- DUCT CONSTRUCTION SHALL BE IN ACCORDANCE WITH THE LATEST EDITION OF THE SMACNA HVAC DUCT CONSTRUCTION STANDARD.
- COORDINATE DIFFUSER, GRILLE AND REGISTER LOCATIONS WITH ARCHITECTURAL REFLECTED CEILING PLANS AND EQUIPMENT OF ALL TRADES.
- ALL DUCT SIZES SHOWN ARE INSIDE CLEAR DIMENSIONS.
- DAMPERS AND INSIDES OF DUCT VISIBLE THROUGH GRILLES, REGISTERS AND DIFFUSERS SHALL BE PAINTED FLAT BLACK.
- CONDENSATE DRAIN FROM ALL MECHANICAL EQUIPMENT SHALL BE PROVIDED FOR PROPER DRAINAGE TO SUIT EQUIPMENT FURNISHED.
- ALL DUCTWORK SHOWN ARE SCHEMATICALLY. PROVIDE ALL TRANSITIONS, TURNING VANES, ELBOWS, FITTINGS ETC; TO ALLOW SMOOTH FLOWS.
- VERIFY FINISH WITH ARCHITECT PRIOR TO PURCHASING GRILLES, REGISTERS, DIFFUSER AND OTHER AIR DISTRIBUTION DEVICES.

FURNACE SCHEDULE (GAS HEATING)

TAG	MANUFACTURE R	MODEL	SUPPLY FAN						COOLING COIL				GAS HEATING	ELECTRICAL			WEIGHT (LBS)	NOTES
			NOMINAL TON	SUPPLY CFM	OA CFM	ESP (IN.W.C.)	MHP	RPM	EAT DB (°F)	EAT WB (°F)	LAT (°F)	TOTAL MBH		MBH	MOC	MCA		
F-1	TRANE	TUHM100	4	1715	300	0.5	1	VARIABLE	80	67	55	48	48	15	10.4	115-1	197	1,2

Notes:

- PROVIDE ECM BLOWER MOTOR.
- PROVIDE 1" EXPANDABLE STANDARD EFFICIENCY MEDIA AIR FILTER.
- TRANE IS BASIS OF DESIGN. IF DIFFERENT MANUFACTURER IS SELECTED THEN CONTRACTOR NEEDS TO MAKE SURE IT MATCHES WITH THE INTENT OF DESIGN.

AIR CONDITIONER SCHEDULE

TAG	SERVICE	MANUFACTURE R	MODEL	TON	REFRIGERANT TYPE	AMBIENT TEMP. (°F)	ELECTRICAL		
							VOLT-PH	MCA	MOC
AC-1	F-1	TRANE	4TTV0048	4	R-410A	95	208-1	23	35

NOTES:

- TRANE IS BASIS OF DESIGN. IF DIFFERENT MANUFACTURER IS SELECTED THEN CONTRACTOR NEEDS TO MAKE SURE IT MATCHES WITH THE INTENT OF DESIGN.

OUTSIDE AIR CALC F-1 (IMC-2019)

ROOM NAME	SQ.FT	PEOPLE	CFM/SQFT	CFM/PERSON	TOTAL CFM/SQFT	TOTAL CFM/PERSON	TOTAL CFM
OPEN AREA	367	0	0.06	0	22.02	0	22.02
DINING ROOM	139	6	0.06	5	8.34	30	38.34
LIVING ROOM	285	6	0.06	5	17.1	30	47.1
BEDROOM 2	113	2	0.06	5	6.78	10	16.78
BEDROOM 1	116	2	0.06	5	6.96	10	16.96
MASTER BEDROOM	151	2	0.06	5	9.06	10	19.06
BEDROOM 4	110	2	0.06	5	6.6	10	16.6
HALLWAY	122	0	0.06	0	7.32	0	7.32
BEDROOM 3	96	2	0.06	5	5.76	10	15.76
TOTAL OUTSIDE AIR REQUIRED							199.94
TOTAL OUTSIDE AIR PROVIDED							300

GRILLES REGISTERS & DIFFUSERS SCHEDULE

SYMBOL	MANUFACTURE R	MODEL	MATERIAL	INLET SIZE (INCH)	FACE SIZE	MOUNTING LOCATION	FACE TYPE
SG-1	TITUS	300R	STEEL	SEE DWG.	INLET +2	GYP.	DOUBLE DEFLECTION
RG-1	TITUS	350R	STEEL	SEE DWG.	INLET +2	GYP.	35° DEFLECTION
TG-1	TITUS	350R	STEEL	SEE DWG.	INLET +2	GYP.	35° DEFLECTION

NOTES:

- ALL RUN OUT DUCTWORK TO DIFFUSERS SHALL BE NECK SIZE UNLESS OTHERWISE NOTED.
- FRAME TYPE TO MATCH MOUNTING LOCATION CONSTRUCTION MATERIAL. COORDINATE WITH ARCHITECTURAL REFLECTED CEILING PLAN.

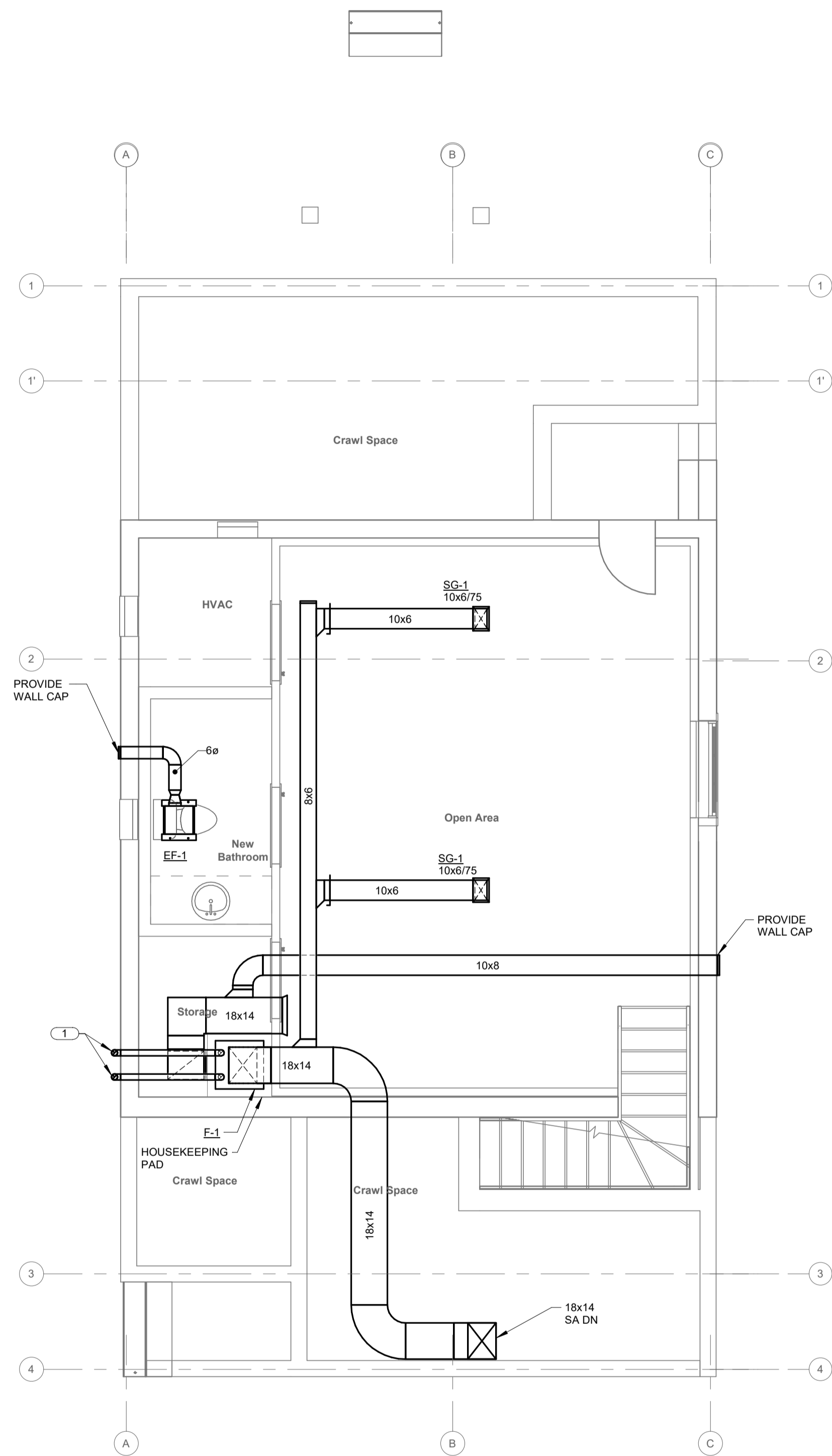
FAN SCHEDULE

SYMBOL	MANUFACTURE R	MODEL	SERVICE LOCATION	CFM	ELECTRICAL	
					POWER (WATT)	VOLT-PHASE
EF-1	COOK	GC-148	NEW BATHROOM	50	36	115-1
EF-2	COOK	GC-148	BATHROOM BEDROOM 1	50	36	115-1
EF-3	COOK	GC-148	BATHROOM BEDROOM 2	50	36	115-1
EF-4	COOK	GC-148	POWDER ROOM	50	36	115-1
EF-5	COOK	GC-148	MASTER BATHROOM	50	36	115-1
EF-6	COOK	GC-148	BAHROOM BEDROOM 4	50	36	115-1

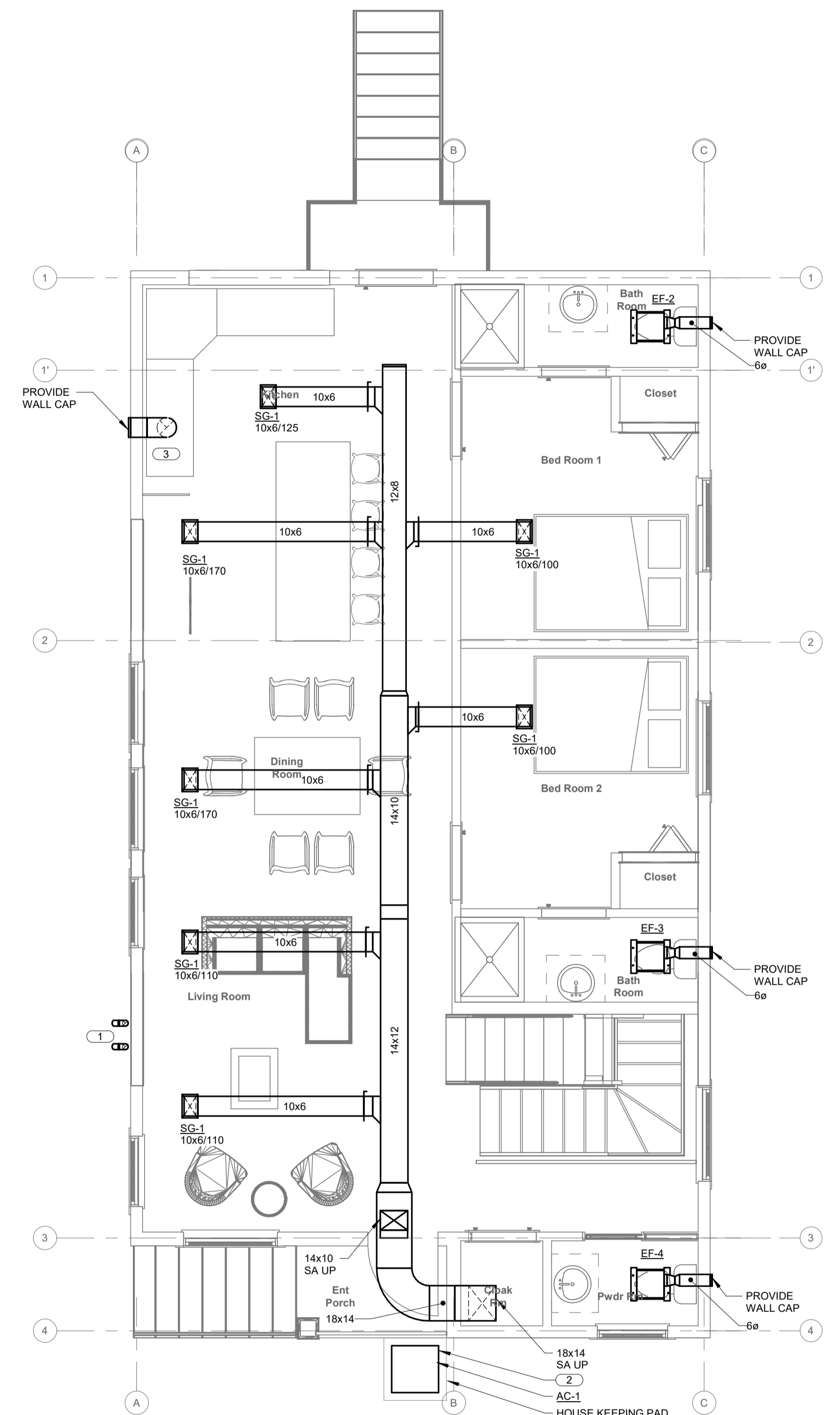
HVAC SHEET INDEX

Sheet Number	Sheet Name	Current Revision
M0.1	MECHANICAL SCHEDULES	
M1.0	BASEMENT AND FIRST MECHANICAL FLOOR PLAN	
M1.1	SECOND AND ROOF MECHANICAL FLOOR PLAN	
M4.1	MECHANICAL DETAILS	
M5.1	HVAC AND GAS RISER	

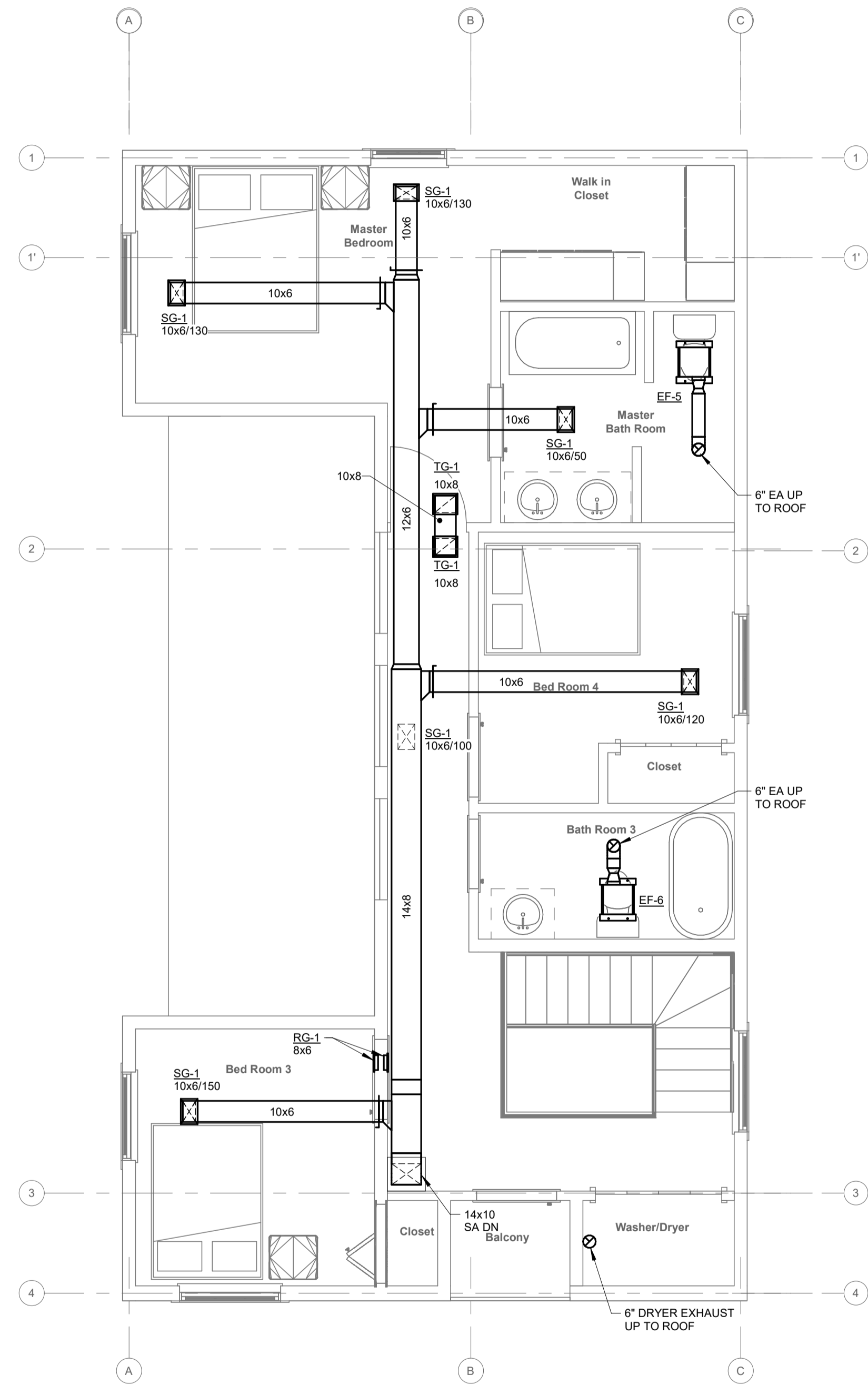
- KEYNOTES:** - #
- 3" FLUE & 3" COMBUSTION AIR (CA) FOR UNIT. TERMINATE BOTH WITH GOOSENECK AND BIRD SCREEN ABOVE GRADE. FLUE SHALL BE AT LEAST 3 FEET ABOVE CA PIPE.
 - INSTALL AND ANCHOR CONDENSING UNIT ON 4" CONCRETE PAD ON THE GROUND. PIPING SHALL BE INDIVIDUALLY INSULATED WITH FIBERGLASS WRAP, TAPED AT 1FT INTERVALS AND ALUMINUM JACKETED. SIZE REFRIGERANT PIPING AS PER MANUFACTURER INSTRUCTION.
 - 10" EA DN TO RANGE HOOD.



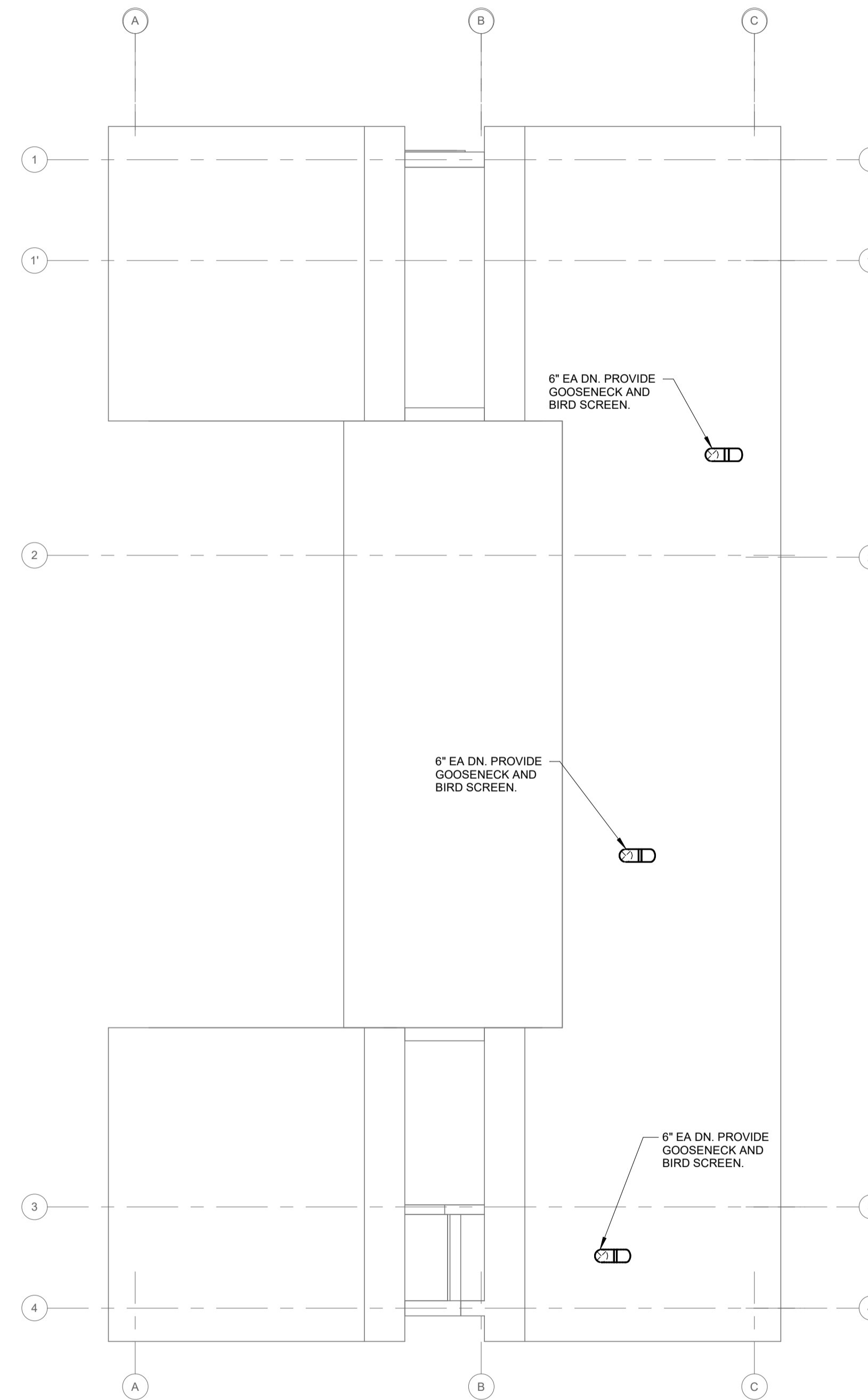
① BASEMENT MECHANICAL FLOOR PLAN
1/4" = 1'-0"



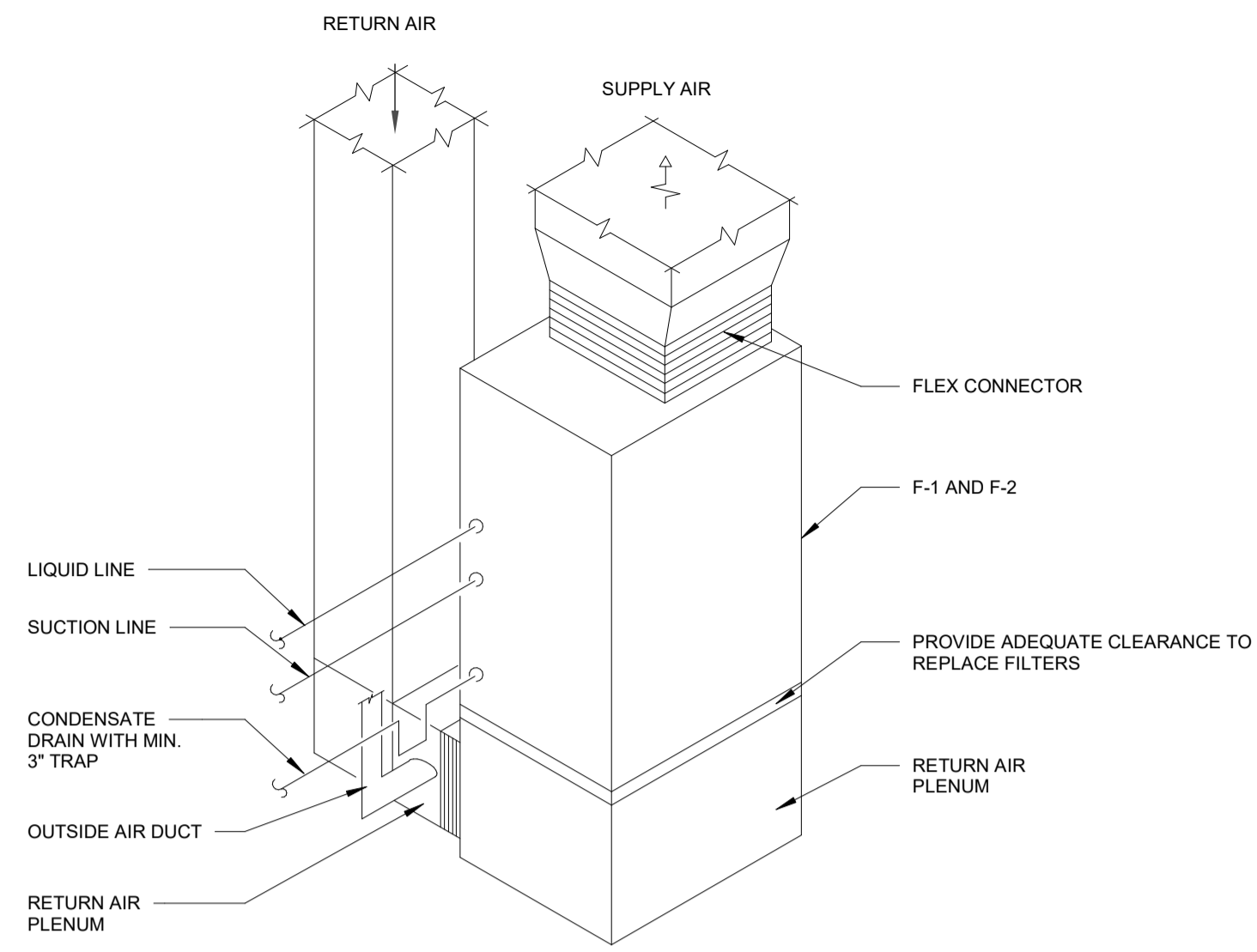
② LEVEL 1 MECHANICAL FLOOR PLAN
1/4" = 1'-0"



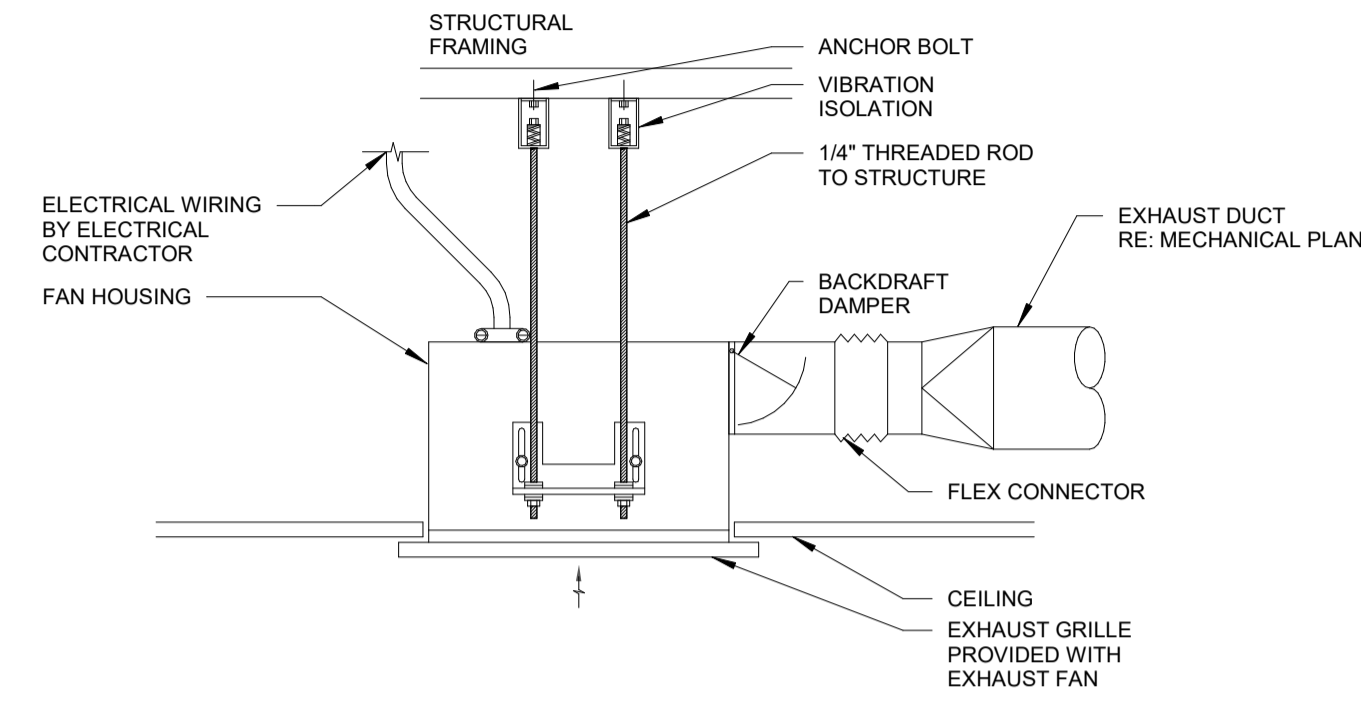
① LEVEL 2 MECHANICAL FLOOR PLAN
1/4" = 1'-0"



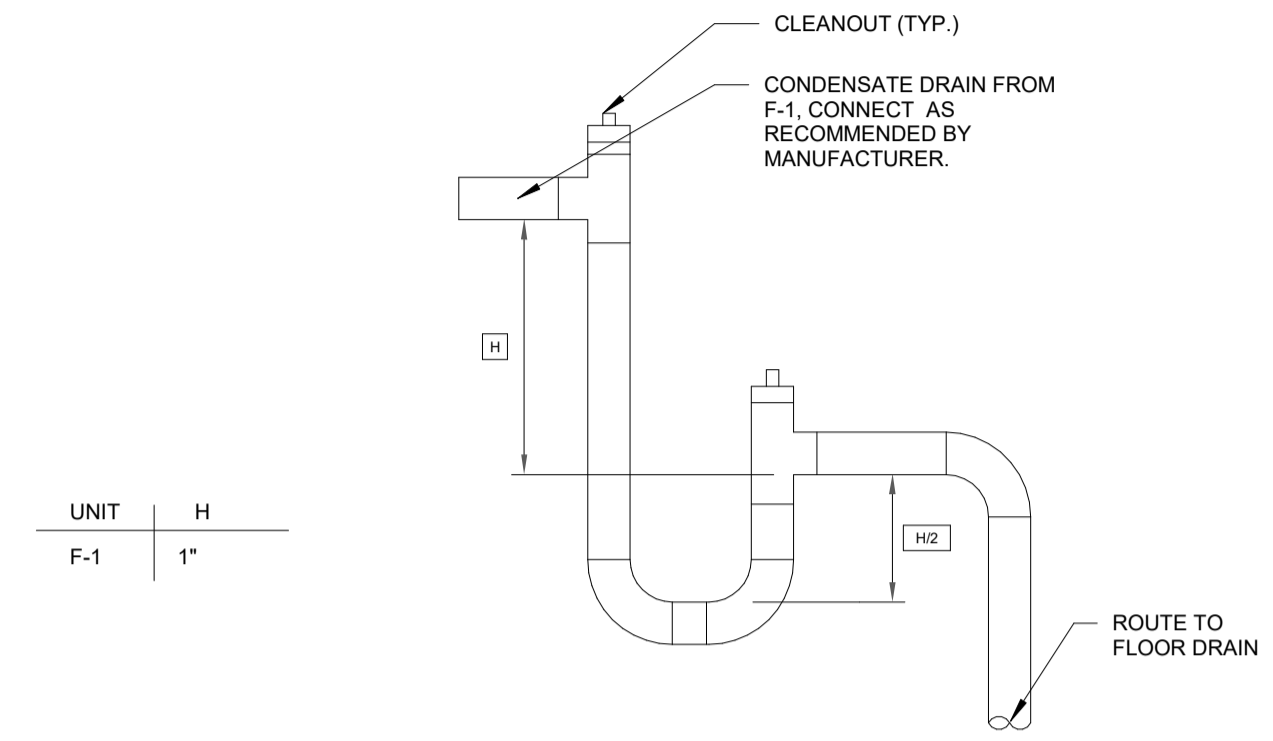
② ROOF MECHANICAL FLOOR PLAN
1/4" = 1'-0"



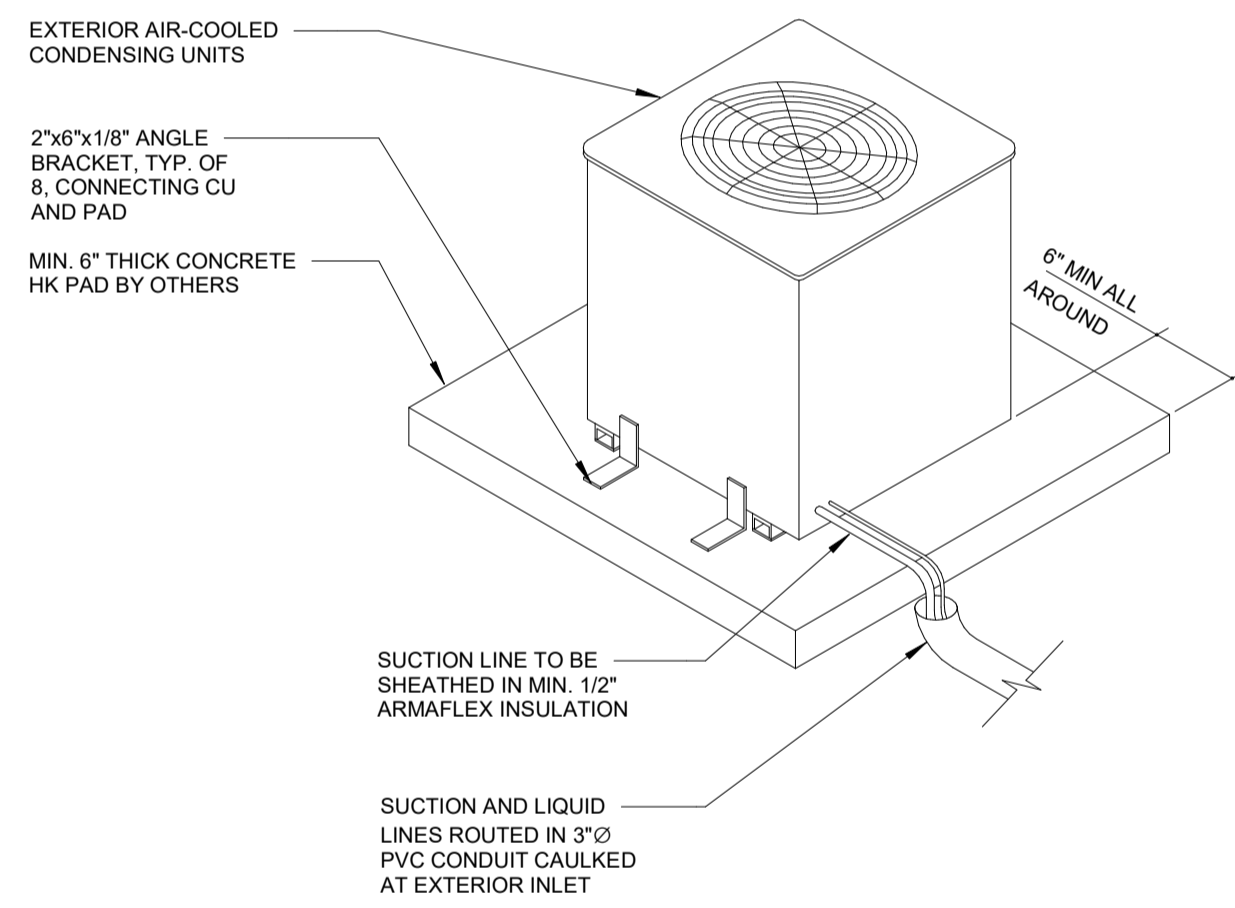
1 VERTICAL AHU DETAIL
NO SCALE



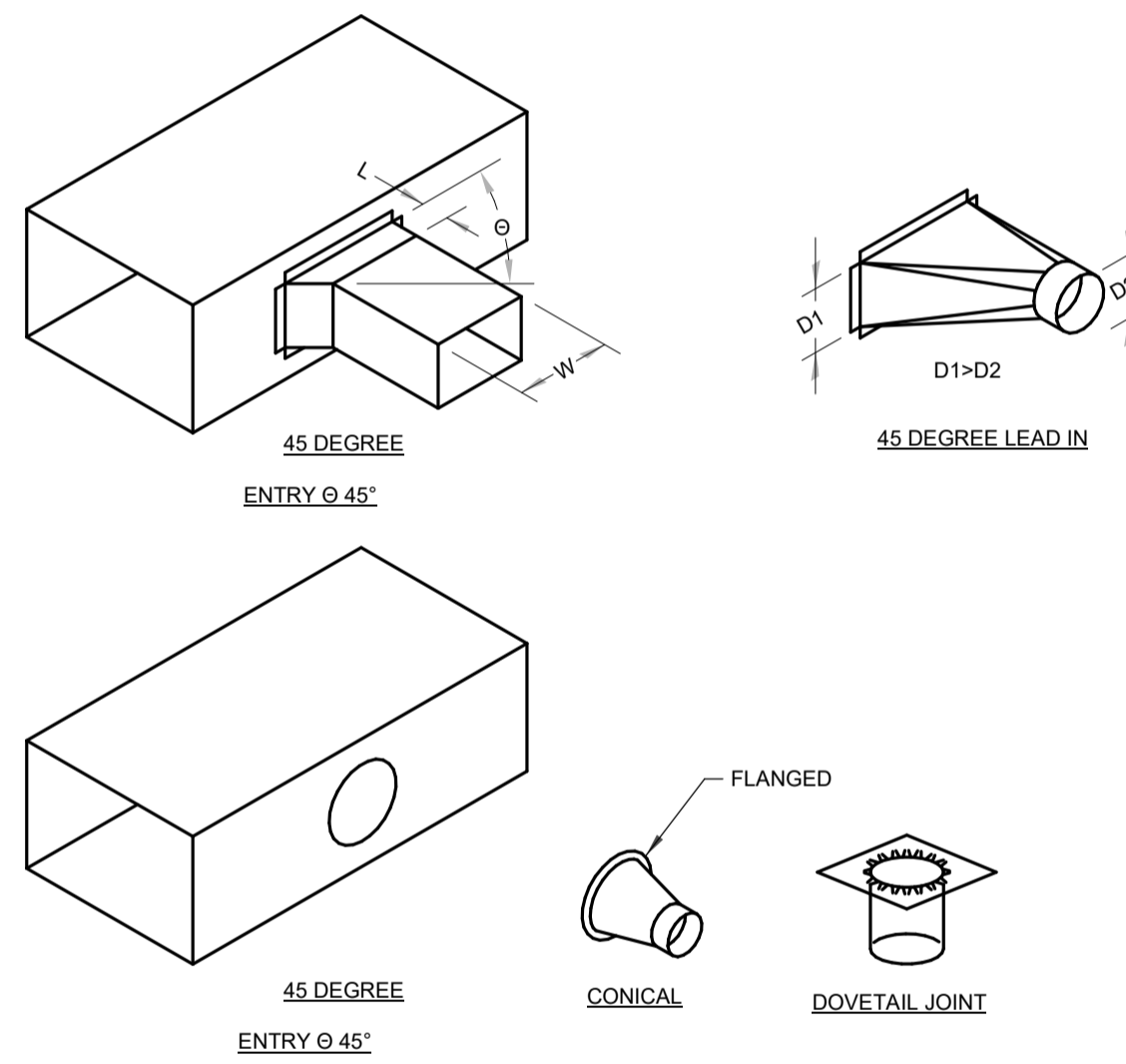
2 CEILING CABINET EXH FAN - SM
NO SCALE



3 CONDENSATE DRAIN TRAP DETAIL
NO SCALE



4 CONDENSING UNIT DETAIL SINGLE
NO SCALE



5 DUCT FITTING
NO SCALE

